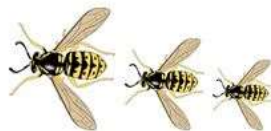


W. A. S. P. S



Weston All Saints CE Primary School
Broadmoor Lane, Weston, Bath
(01225) 421786

westonallsaints_pri@wasp-school.org.uk

www.wasp-school.org.uk

Mrs Sarah Halls

Headteacher

Mrs Sharon Badger

Deputy Headteacher

Wednesday 7th July 2021

Dear Parents and Carers,

Advice to All Parents – cases at WASPS

In common with many other schools at this time, we now have a number of cases of Covid-19 in school, to date 4 in Year 2 and 4 in Year 3, plus one member of staff. These two year groups are currently isolating for ten days, accessing their learning remotely.

Close contacts are considered to be those who have been within 2 metres for a total of 15 minutes or more, within 1 metre for a minute, or face to face within a metre at all, during the contagious period, which is deemed to start from two whole days before symptoms develop.

I have been in contact with BANES Public Health on a daily basis for the last week and we are following the government and Public Health England guidance closely. One of the recommendations, which has been shared with parents is to get a PCR for all those isolating, including those without symptoms. It is this move that has brought to light a number of cases which we otherwise would not have known about.

We are continuing to monitor the situation carefully.

The school remains open to all other pupils providing they are well and are not displaying any Covid-19 symptoms.

Public Health England recommend that children with non-COVID-specific symptoms of acute respiratory infection don't go into school if they are unwell as a general rule, and get tested if they (or their families) progress to COVID 19 symptoms whilst unwell.

We believe this is because some people who have caught the Delta variant of the virus recently, have reported feeling 'as if they had a summer cold, with headache, sore throat, runny nose, sneezing' for the first few days. Only a few days later have the 'typical' Covid symptoms become apparent.



**Artsmark
Gold Award**
Awarded by Arts
Council England



Chief Executive Officer: Mrs Emily Massey

The Partnership Trust is a charitable company limited by guarantee registered in England and Wales under No. 07728112

Registered Office: Fosse Way School, Longfellow Road, Radstock, BA3 3AL



What to do if your child develops symptoms of COVID 19

If your child develops symptoms of COVID-19, they must not come to school and should remain at home for at least **10 days** from the date when their symptoms appeared. Anyone with symptoms will be eligible for testing and this can be arranged via <https://www.gov.uk/guidance/coronavirus-covid-19-getting-tested> or by calling 119.

All other household members who remain well, must stay at home and not leave the house for 10 days. This includes anyone in your 'Support Bubble'.

People who are isolating because they are close contacts of a confirmed case of COVID-19 are now encouraged to take a PCR test. This is recommended for contacts who don't have any symptoms as well as those who do.

Close contacts of a confirmed case, can book a PCR test via [Get a free PCR test to check if you have coronavirus \(COVID-19\) - GOV.UK \(www.gov.uk\)](#) or by calling 119. If the test is positive, you will be provided with further advice by the NHS Test and Trace service. Please also advise the school of the positive result at the first opportunity.

Further information is available at: <https://www.gov.uk/government/publications/covid-19-stay-at-home-guidance/stay-at-home-guidance-for-households-with-possible-coronavirus-covid-19-infection>

The 10-day period starts from the day when the first person in the house became ill.

Those who are isolating should not go to work, school or public areas.

Household members staying at home for 10 days will greatly reduce the overall amount of infection the household could pass on to others in the community.

If you are able, move any vulnerable individuals (such as the elderly and those with underlying health conditions) out of your home, to stay with friends or family for the duration of the home isolation period.

Symptoms

The most common symptoms of coronavirus (COVID-19) are recent onset of:

- a new continuous cough
- a high temperature
- a loss of, or change in, your normal sense of taste or smell (anosmia)

For most people, coronavirus (COVID-19) will be a mild illness.



Artsmark
Gold Award
Awarded by Arts
Council England



Chief Executive Officer: Mrs Emily Massey

The Partnership Trust is a charitable company limited by guarantee registered in England and Wales under No. 07728112

Registered Office: Fosse Way School, Longfellow Road, Radstock, BA3 3AL



If your child does develop symptoms, you can seek advice from the nhs.uk website at <https://www.nhs.uk/conditions/coronavirus-covid-19/check-if-you-have-coronavirus-symptoms/>. If you are concerned about your child's symptoms, or they are worsening you can seek advice from NHS 111 at <https://111.nhs.uk/> or by phoning 111.

How to stop COVID-19 spreading

There are things you can do to help reduce the risk of you and anyone you live with getting ill with COVID-19

Do

- wash your hands with soap and water often – do this for at least 20 seconds
- use hand sanitiser gel if soap and water are not available
- wash your hands as soon as you get home
- cover your mouth and nose with a tissue or your sleeve (not your hands) when you cough or sneeze
- put used tissues in the bin immediately and wash your hands afterwards

Further Information can be found here:

<https://www.gov.uk/government/publications/covid-19-stay-at-home-guidance/stay-at-home-guidance-for-households-with-possible-coronavirus-covid-19-infection>

[Guidance for contacts of people with confirmed coronavirus \(COVID-19\) infection who do not live with the person - GOV.UK \(www.gov.uk\)](#)

Please refer to Covid-19 A Quick Guide for Parents and Carers:

<https://www.wasp-school.org.uk/wp-content/uploads/2021/01/Covid-19-A-quick-guide-for-parents-and-carers-04.01.21.pdf>

<https://www.nhs.uk/conditions/coronavirus-covid-19/>

With our best wishes,

Mrs Sarah Halls
Headteacher

Mrs Sharon Badger
Deputy Headteacher



Artsmark
Gold Award
Awarded by Arts
Council England



Chief Executive Officer: Mrs Emily Massey

The Partnership Trust is a charitable company limited by guarantee registered in England and Wales under No. 07728112

Registered Office: Fosse Way School, Longfellow Road, Radstock, BA3 3AL

