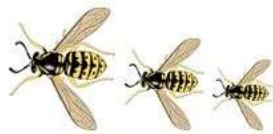


# W. A. S. P. S



Weston All Saints CE Primary School  
Broadmoor Lane, Weston, Bath  
(01225) 421786

[westonallsaints\\_pri@wasp-school.org.uk](mailto:westonallsaints_pri@wasp-school.org.uk)

[www.wasp-school.org.uk](http://www.wasp-school.org.uk)

**Mrs Sarah Halls**

Headteacher

**Mrs Sharon Badger**

Deputy Headteacher

Monday 14<sup>th</sup> December 2020

Dear Parents / Carers,

Each year all school admission authorities have to review their admissions arrangements and formally set (known as determine) their arrangements by 28<sup>th</sup> February.

Currently all schools within The Partnership Trust are reviewing their admission arrangements for the academic year 2022-23.

As part of this process, the Trust and schools within it have considered their over-subscription criteria. These are relevant when there are more preferences for places than places available.

If schools wish to make changes to their admissions arrangements, they are required to follow a consultation process. Even if they do not wish to make changes, they are required to carry out a consultation every 7 years. This year all schools that are part of The Partnership Trust are consulting on their admissions arrangements. You will find on the school website (<https://www.wasp-school.org.uk/>) a consultation notice as well as a copy of the proposed admissions arrangements, including the over-subscription criteria.

There are no proposed changes to the over-subscription criteria in the Admissions Criteria for WASPS.

The consultation notice details what you can do if you wish to raise any points in connection with the consultation and what happens next. If you would like a hard copy of these documents, please get in touch with the school office.

Yours faithfully,

Mrs Sarah Halls  
Headteacher



Artsmark  
Gold Award  
Awarded by Arts  
Council England



Chief Executive Officer: Mrs Emily Massey

The Partnership Trust is a charitable company limited by guarantee registered in England and Wales under No. 07728112

Registered Office: Fosse Way School, Longfellow Road, Radstock, BA3 3AL

